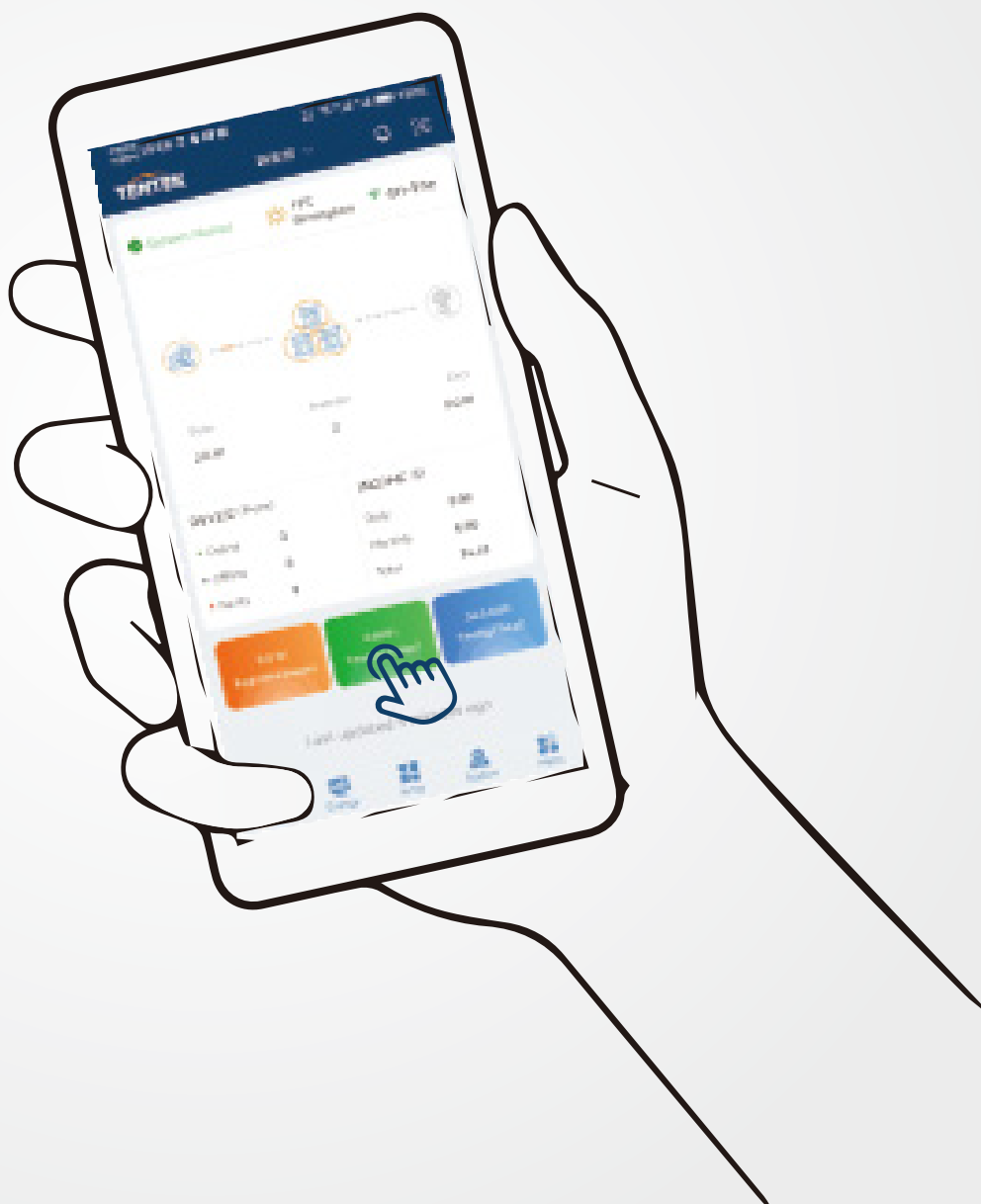


T-Shine APP User Guide

————— for microinverter



Scan above QR code to quickly install the T-Shine APP.

T-Shine Cloud is a microinverter system monitoring cloud platform that provides real-time monitoring of the microinverter system's daily power generation, power consumption, carbon emission reduction and benefits. It also allows module-level monitoring, which can monitor the power generation efficiency and operating status of each PV panel of the user's microinverter system. If the microinverter system fails, the monitoring platform will give an active alarm to help users adjust and troubleshoot in real time.

How to set up Tentek T-Shine APP in your mobile is described below- its plain and simple!

Preparation

1. Find the QR code from the back side of the microinverter (as shown in step 5)
2. Build your solar system installation map (as shown in step 5)

For QR code and SN you will see two same stickers back on the microinverter, one is permanent, can't be taken off; another is flexible to be taken off and can be put on the solar map. And the reason for this- once the microinverter is installed, it will be kind of fixed under the solar panel; so in the future the QR code can't be scan or the serial number can't be seen conveniently. So it's recommended to take off one sticker and put it on to the solar map.

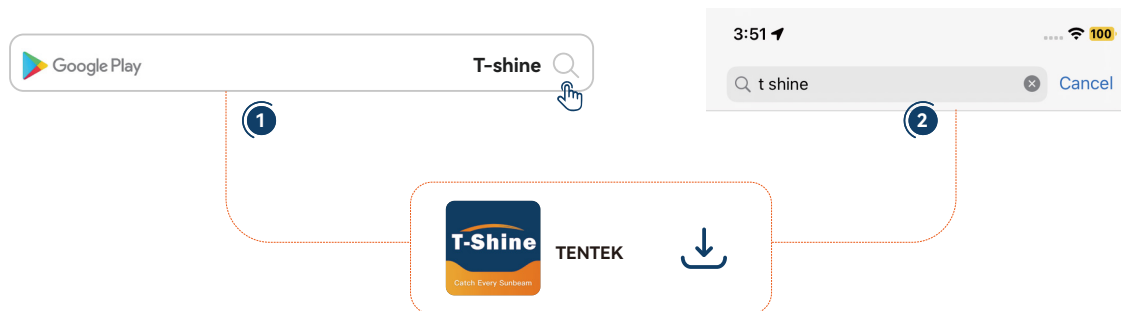
3. Please install the microinverter according to the Tentek manual and turn on each microinverter.
4. Ensure your home WIFI is on working and write down your home WIFI's account and password.
5. Open your mobile phone's Bluetooth and WIFI in advance.

It will take approximately 2-3 minuetts to finish the following 6 steps

Step 1

Download Tentek T-Shine APP

- For Android: Type 'T-Shine' on Google Play Search Bar
- For IOS: Type 'T-Shine' on Apple Store Search Bar



When you search, T-Shine APP will pop up as shown. Download the T-Shine APP.

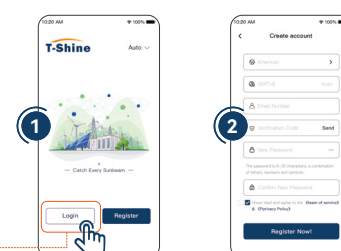
Step 2

Register an account and login

After Completing download, open the T-Shine APP; you will see two options: Login and Register. If you registered previously, you just can directly login putting your email and password. If you are a new user then click "Register". You will see the "Register" page as picture shown. Please complete the registration information as required.



Congratulations, you have successfully become our user

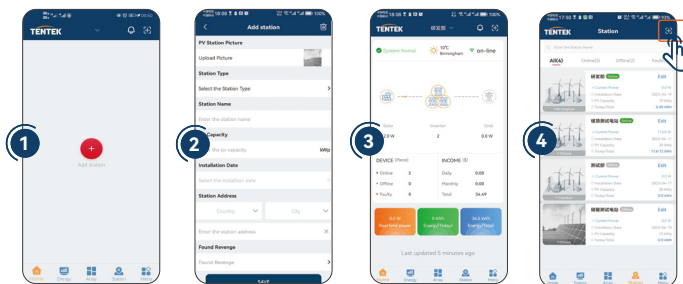


Step 3

Add a station first

After completing your registration “Add Station” page will pop up (as picture 1). Click on “Add station” as shown red circle with “+” sign. Then the next step will pop up (picture 2). Please fill up your station information as required, clicking save will take you to final stage (picture 3). Now you have successfully completed adding your solar power station on T-Shine cloud monitoring system.

If you have more than one station, please click the “Station” at the bottom side. Go to the station page (as the picture 4), then click the “+” in the right top corner to add more solar station.



Right now you have successfully completed adding your solar power station on T-Shine cloud monitoring system.

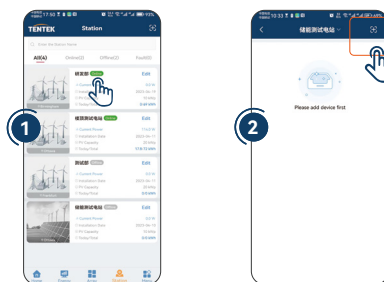
Step 4

The path of adding microinverter devices

There are two options allowing directly to add the microinverter devices

4.1 From “home page”, click the “+” sign in the right top corner (as followed picture), this path is suitable for only one station.

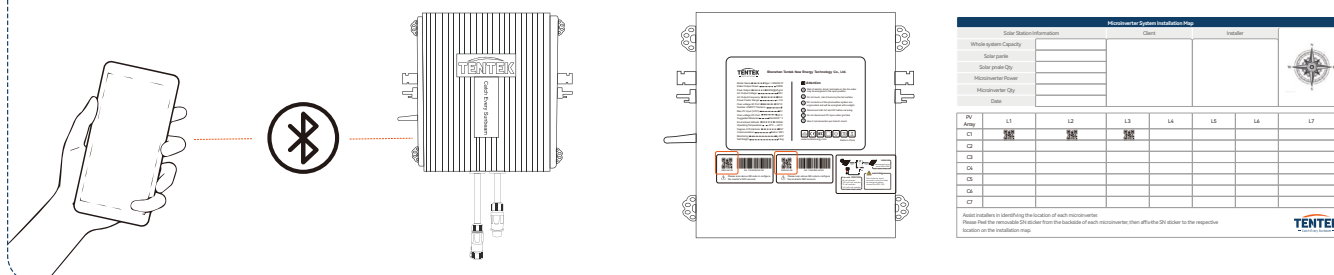
4.2 From the “station page” click any specific “station icon”, it will redirect to the microinverter list page; to add more microinverter to the specific station click “+” sign in the right top corner (as picture 2). Thus click each station to add more microinverter to a specific station.



Step 5

Add microinverter

Note: Keep your phone within 10 meters range to the microinverter (make sure your phone is in good communication with the Bluetooth of the microinverter)



Step 5

Add microinverter

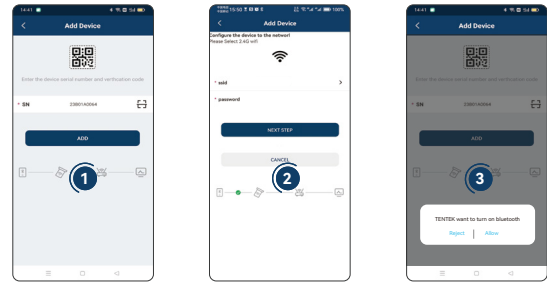
5.1 Scan the WIFI code.

5.1.1 Take out your prepared “Installation Map”, and scan each inverter’s the QR code by your mobile, or directly scan the QR code from each inverter’s back side WIFI sticker.



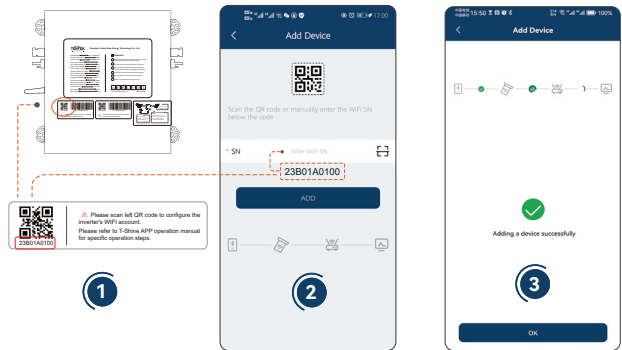
5.1.2 After scan the QR code, you will get the WIFI SN number(as following picture 1), then click **ADD**, will redirect to next page (shown picture 2).

Note: if you forgot turn on your mobile Bluetooth, in this step the APP will automatically remind you to turn on bluetooth(as shown picture 3)



5.2 Manually type in the WIFI code given as below the QR code.

Take out your prepared installation map, or directly from each inverter’s back side to find the WIFI SN number. Please see the following pictures, under the QR code there is a 10 digits hybrid number which is the WIFI SN code, just manually input it (as right picture), 2

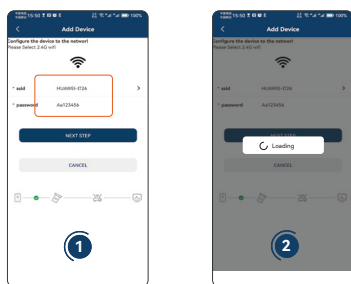


then follow 6.1-6.3 to finish your inverter's adding.

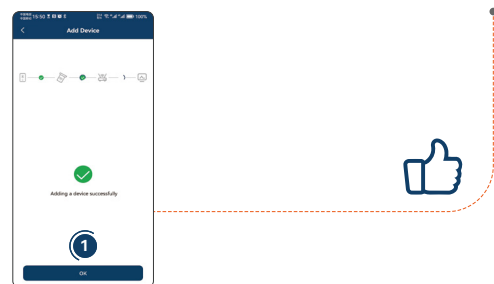
Step 6

Add microinverter

6.1 Type in your home WIFI account and password (picture 1), click **Next Step** will redirect to the configuration page(following picture 2).



6.2 In the configuration page, you just wait about 20 seconds to be completed the configuration (following picture 1). The inverter will be successfully added.



6.3 If adding and configuration fail, please check the inverter if working on, and your home WiFi if on working order then be closer to the added inverter, try again.